



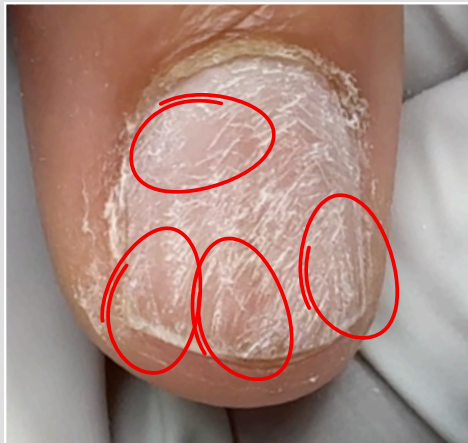
HIGH QUALITY NAIL PREP RULES



HIGH QUALITY NAIL PREP:



Take a close look at the nail plate and judge the quality of your prep.



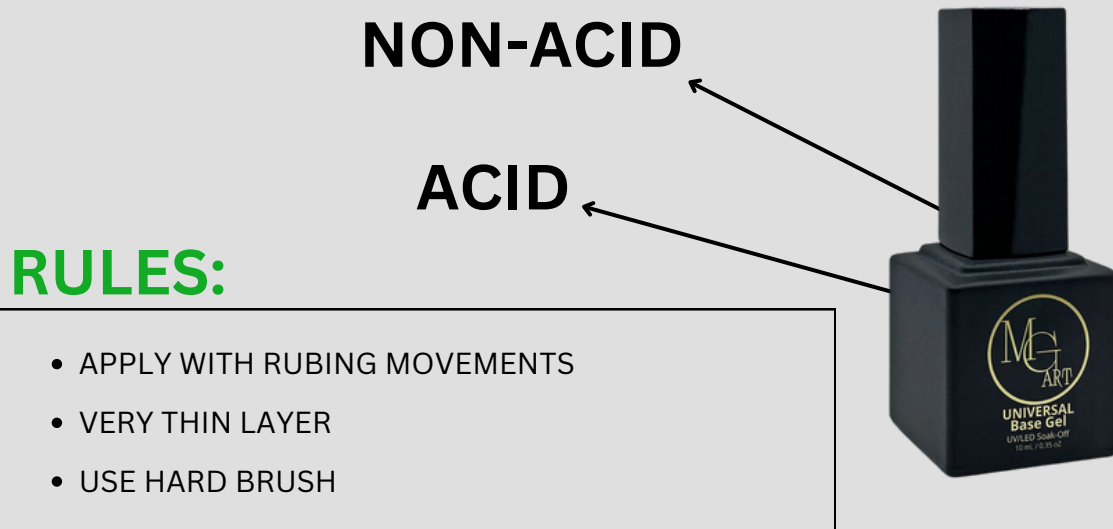
Everything marked with a red circle is a future lifting point.

Any area that isn't fully etched becomes an instant air pocket between the gel and the natural nail.



Here the nail plate has been evenly prepped with a 180-grit file—perfect adhesion guaranteed.

The scales lie downward.



- HERE YOU STILL SEE SCALES
- BASE GEL SURFACE IS NOT SOLID GLOSSY

PTERYGIUM?



As you may know, I almost never remove the pterygium before applying Dual Forms (and no, this doesn't cause lifting).

There's a solid reason for that—mainly to save precious time.

I explain the full rationale in detail in my Online training.

My Students are leaders in the nail industry, and you have the chance to join the champions' league and **start earning right now**.

START



*0% installment is available.